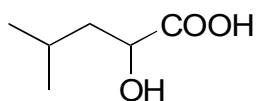


H-09

Leucic acid

**OA-6100** $\alpha=1.87$

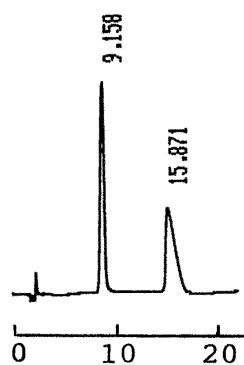
Column : 4.6mm i.d.×150mm

Mobile phase :

2mmol/L copper(II) sulfate
in [water/acetonitrile (90/10)]

Flow rate : 1mL/min

Detector : UV 254nm

Injection : 3 μ L (9mg/mL)**OA-5000** $\alpha=1.40$

Column : 4.6mm i.d.×50mm

Mobile phase :

2mmol/L copper(II) sulfate
in [water/methanol (70/30)]

Flow rate : 1mL/min

Detector : UV 254nm

