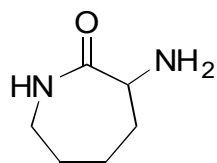


G-30

 α -Amino- ϵ -caprolactam**OA-6100** $\alpha=4.96$

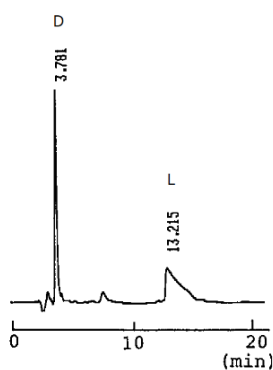
Column : 4.6mm i.d.×150mm

Mobile phase :

1mmol/L copper(II) sulfate
in water

Flow rate : 1mL/min

Detector : UV 254nm

Injection : 3 μ L (5mg/mL)**OA-6000** $\alpha=2.72$

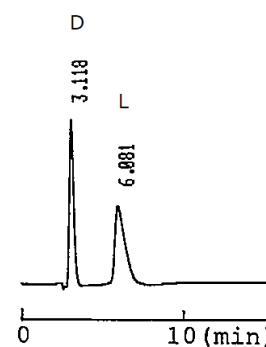
Column : 4.6mm i.d.×150mm

Mobile phase :

2mmol/L copper(II) sulfate
in [water/acetonitrile (95/5)]

Flow rate : 1mL/min

Detector : UV 254nm

**OA-5000** $\alpha=1.30$

Column : 4.6mm i.d.×150mm

Mobile phase :

1mmol/L copper(II) sulfate
in water

Flow rate : 1mL/min

Detector : UV 254nm

