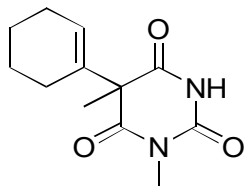
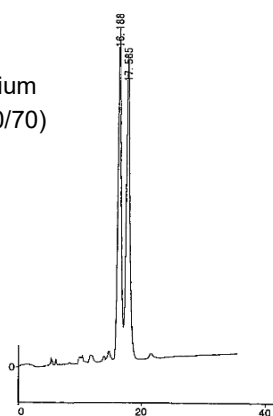


G-21

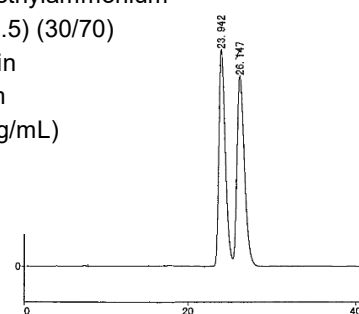
Hexobarbital

**OA-7000** $\alpha=1.12$

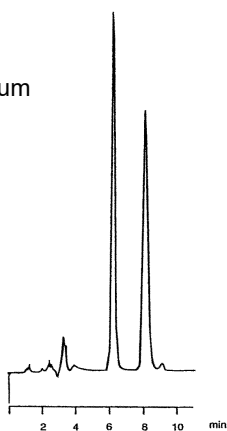
Column : 4.6mm i.d.×250mm
 Mobile phase :
 acetonitrile/20mmol/L potassium
 phosphate buffer (pH 3.5) (30/70)
 Flow rate : 0.7mL/min
 Detector : UV 254nm

**OA-7100** $\alpha=1.11$

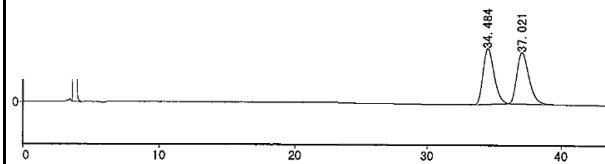
Column : 4.6mm i.d.×250mm
 Mobile phase :
 acetonitrile/0.1% triethylammonium
 acetate buffer (pH 5.5) (30/70)
 Flow rate : 0.7mL/min
 Detector : UV 254nm
 Injection : 2 μ L (10mg/mL)

**OA-7500** $\alpha=1.55$

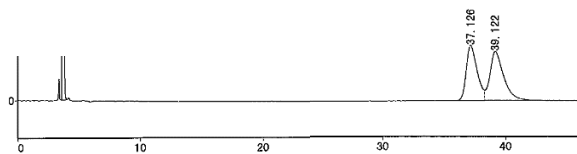
Column : 4.6mm i.d.×250mm
 Mobile phase :
 methanol/0.1% triethylammonium
 acetate buffer (pH 4.0) (55/45)
 Flow rate : 0.7mL/min
 Detector : UV 230nm

**OA-4800** $\alpha=1.08$

Column : 4.6mm i.d.×250mm
 Mobile phase :
 hexane/ethanol (100/1)
 Flow rate : 1mL/min
 Detector : UV 230nm
 Injection : 1 μ L (1mg/mL)

**OA-4700** $\alpha=1.06$

Column : 4.6mm i.d.×250mm
 Mobile phase :
 hexane/ethanol (100/1)
 Flow rate : 1mL/min
 Detector : UV 230nm
 Injection : 1 μ L (1mg/mL)

**AGP** $\alpha=1.51$

Column : 4mm i.d.×100mm
 Mobile phase :
 2-propanol/10mmol/L sodium
 phosphate buffer (pH 7.0) (2/98)
 Flow rate : 0.9mL/min
 Detector : UV 225nm

