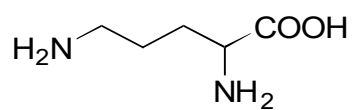


G-16

Ornithine

**OA-6100** $\alpha=2.29$

Column : 4.6mm i.d.×150mm

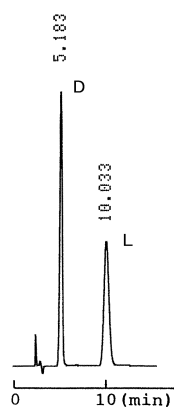
Mobile phase :

1mmol/L copper(II) sulfate

in water

Flow rate : 1mL/min

Detector : UV 254nm

Injection : 2 μ L (5mg/mL)**OA-5000** $\alpha=1.38$

Column : 4.6mm i.d.×150mm

Mobile phase :

1mmol/L copper(II) sulfate

in water

Flow rate : 0.2mL/min

Detector : UV 254nm

