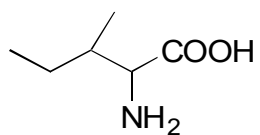


G-15

Alloisoleucine

**OA-6000** $\alpha=2.79$

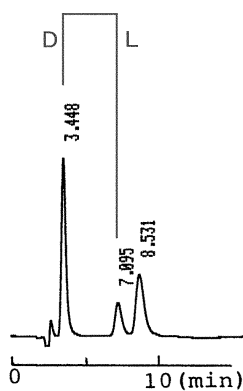
Column : 4.6mm i.d.×150mm

Mobile phase :

2mmol/L copper(II) sulfate
in [water/acetonitrile (85/15)]

Flow rate : 1mL/min

Detector : UV 254nm

**OA-5000** $\alpha=1.67$

Column : 4.6mm i.d.×150mm

Mobile phase :

2mmol/L copper(II) sulfate
in [water/2-propanol (95/5)]

Flow rate : 1mL/min

Detector : UV 254nm

