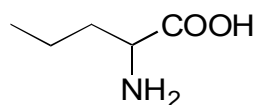


G-11

Norvaline

**OA-6100** $\alpha=8.46$ 

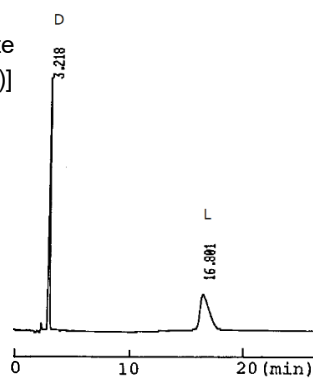
Column : 4.6mm i.d.×150mm

Mobile phase :

2mmol/L copper( II ) sulfate  
in [water/acetonitrile (95/5)]

Flow rate : 1mL/min

Detector : UV 254nm

Injection : 2 $\mu$ L (2.5mg/mL)**OA-6000** $\alpha=5.44$ 

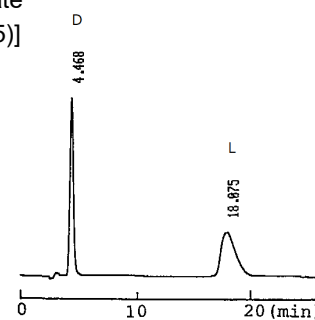
Column : 4.6mm i.d.×150mm

Mobile phase :

2mmol/L copper( II ) sulfate  
in [water/acetonitrile (95/5)]

Flow rate : 1mL/min

Detector : UV 254nm

**OA-5000** $\alpha=1.72$ 

Column : 4.6mm i.d.×150mm

Mobile phase :

2mmol/L copper( II ) sulfate  
in [water/2-propanol (95/5)]

Flow rate : 1mL/min

Detector : UV 254nm

Injection : 3 $\mu$ L (2mg/mL)