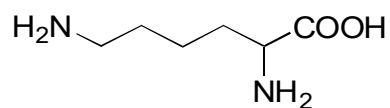


G-06

Lysine

**OA-6100** $\alpha=4.03$

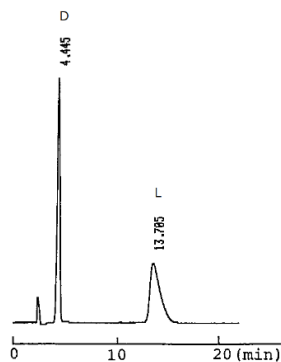
Column : 4.6mm i.d.×150mm

Mobile phase :

1mmol/L copper(II) sulfate
in water

Flow rate : 1mL/min

Detector : UV 254nm

Injection : 3 μ L (5mg/mL)**OA-6000** $\alpha=2.31$

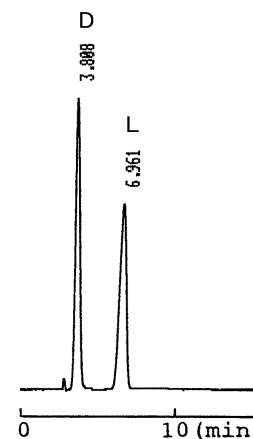
Column : 4.6mm i.d.×150mm

Mobile phase :

1mmol/L copper(II) sulfate
in water

Flow rate : 1mL/min

Detector : UV 254nm

**OA-5000** $\alpha=1.81$

Column : 4.6mm i.d.×150mm

Mobile phase :

1mmol/L copper(II) sulfate
in water

Flow rate : 0.2mL/min

Detector : UV 254nm

