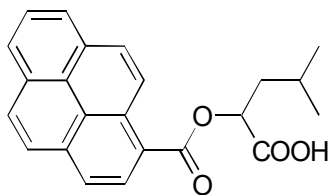


D-18 **O-Pyrene-1-carbonylleucic acid****OA-3200** $\alpha = 1.55$

Column : 4.6mm i.d.×250mm

Mobile phase :

0.1mol/L ammonium acetate
in methanol/dioxane (50/50)

Flow rate : 1mL/min

Detector : FL Ex 350nm

Em 410nm

