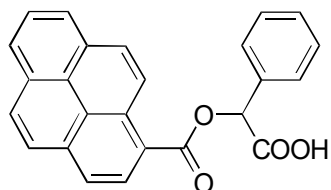


D-16

O-Pyrene-1-carbonylmandelic acid

**OA-3200** $\alpha=1.97$

Column : 4.6mm i.d.×250mm

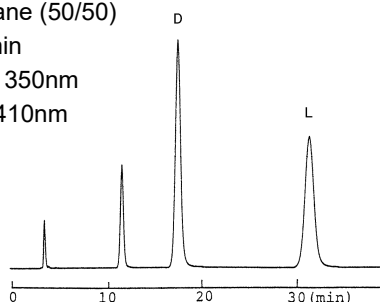
Mobile phase :

0.1mol/L ammonium acetate
in methanol/dioxane (50/50)

Flow rate : 1mL/min

Detector : FL Ex 350nm

Em 410nm

**OA-3100** $\alpha=1.35$

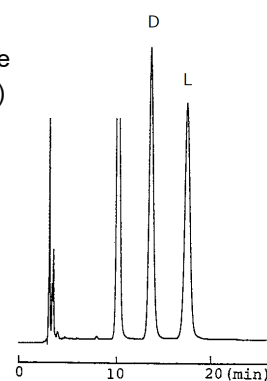
Column : 4.6mm i.d.×250mm

Mobile phase :

0.1mol/L ammonium acetate
in methanol/dioxane (50/50)

Flow rate : 1mL/min

Detector : UV 254nm

**OA-2500** $\alpha=1.33$

Column : 4.6mm i.d.×250mm

Mobile phase :

0.1mol/L ammonium acetate
in methanol/dioxane (50/50)

Flow rate : 1mL/min

Detector : UV 254nm

