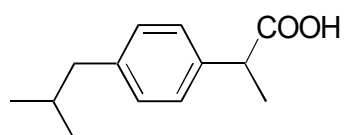


D-04

Ibuprofen

**OA-2500** $\alpha = 1.11$

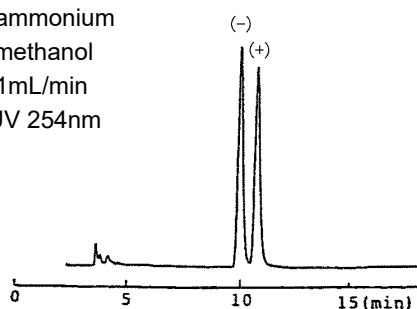
Column : 4.6mm i.d.×250mm

Mobile phase :

0.03mol/L ammonium acetate in methanol

Flow rate : 1mL/min

Detector : UV 254nm

**OA-3300** $\alpha = 1.09$

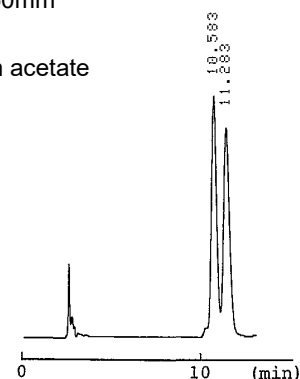
Column : 4mm i.d.×250mm

Mobile phase :

0.01mol/L ammonium acetate in methanol

Flow rate : 1mL/min

Detector : UV 254nm

**OA-7000** $\alpha = 1.12$

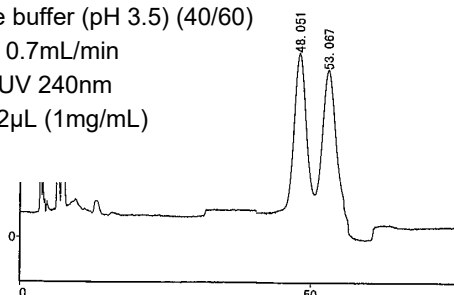
Column : 4.6mm i.d.×250mm

Mobile phase :

acetonitrile/20mmol/L potassium phosphate buffer (pH 3.5) (40/60)

Flow rate : 0.7mL/min

Detector : UV 240nm

Injection : 2 μ L (1mg/mL)**AGP** $\alpha = 1.96$

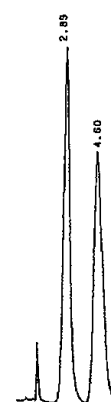
Column : 4mm i.d.×100mm

Mobile phase :

1mmol/L dimethyloctylamine in 10mmol/L sodium phosphate buffer (pH 7.0)

Flow rate : 0.9mL/min

Detector : UV 225nm

**AGP** $\alpha = 1.39$

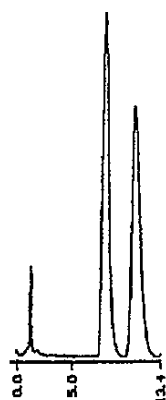
Column : 4mm i.d.×100mm

Mobile phase :

100mmol/L sodium phosphate buffer (pH 7.0)

Flow rate : 0.9mL/min

Detector : UV 225nm

**HSA** $\alpha = 1.73$

Column : 4mm i.d.×100mm

Mobile phase :

10% 2-propanol and 5mmol/L octanoic acid in 100mmol/L sodium phosphate buffer (pH 7.0)

Flow rate : 0.9mL/min

Detector : UV 225nm

