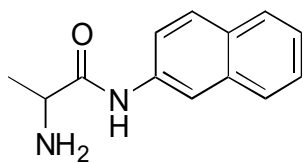


C-71 Alanine- β -naphthylamide**OA-8000** $\alpha = 1.17$ Column : 4.6mm i.d. \times 250mm

Mobile phase :

acetonitrile/perchloric
acid (pH 2.0) (20/80)

Flow rate : 0.7mL/min

Detector : UV 254nm

Injection : 1 μ L (5mg/mL)