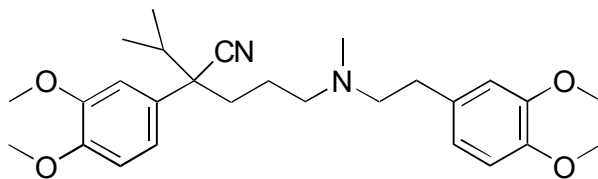


C-13

Verapamil

**OA-4900** $\alpha = 1.12$

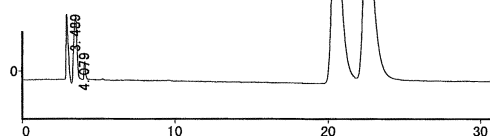
Column : 4.6mm i.d.×250mm

Mobile phase :

hexane/2-propanol/
methanol (80/10/10)

Flow rate : 1mL/min

Detector : UV 254nm

Injection : 5 μ L (1mg/mL)**OA-4100** $\alpha = 1.09$

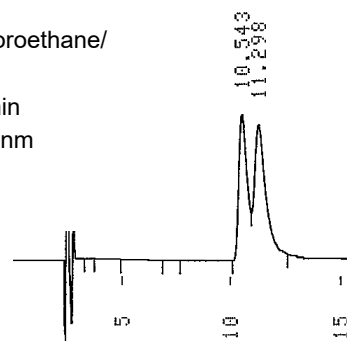
Column : 4mm i.d.×250mm

Mobile phase :

hexane/1,2-dichloroethane/
ethanol (80/15/5)

Flow rate : 1mL/min

Detector : UV 254nm

**OA-4500** $\alpha = 1.08$

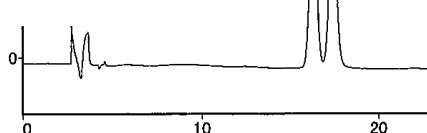
Column : 4.6mm i.d.×250mm

Mobile phase :

hexane/2-propanol/
methanol (80/10/10)

Flow rate : 1mL/min

Detector : UV 254nm

Injection : 5 μ L (1mg/mL)**AGP** $\alpha = 1.31$

Column : 4mm i.d.×100mm

Mobile phase :

acetonitrile/10mmol/L sodium
phosphate buffer (pH 7.0) (12/88)

Flow rate : 0.9mL/min

Detector : UV 225nm

