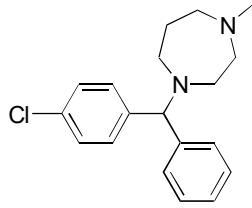


C-12

Homochlorcyclizine

**OA-4900** $\alpha = 1.08$ 

Column : 4mm i.d. x250mm

Mobile phase :

hexane/1,2-dichloroethane/  
methanol/trifluoroacetic  
acid (290/100/10/1)

Flow rate : 1mL/min

Detector : UV 254nm

