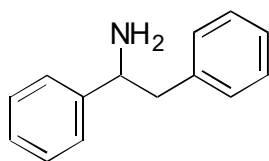
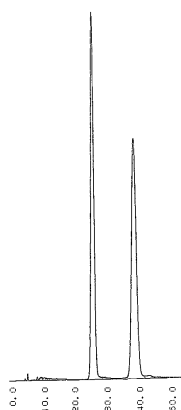


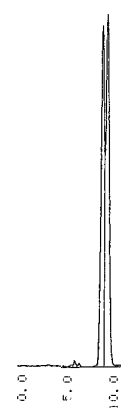
<b>C-03</b>	<b>1,2-Diphenyl-ethylamine</b>
-------------	--------------------------------

**OA-7700** $\alpha = 1.64$ 

Column : 4.6mm i.d.×250mm  
 Mobile phase :  
 methanol/20mmol/L potassium  
 phosphate buffer (pH 3.0) (40/60)  
 Flow rate : 0.5mL/min  
 Detector : UV 210nm  
 Injection : 1 $\mu$ L (2mg/mL)

**OA-7000** $\alpha = 1.18$ 

Column : 4.6mm i.d.×250mm  
 Mobile phase :  
 methanol/20mmol/L potassium  
 phosphate buffer (pH 3.0) (40/60)  
 Flow rate : 0.5mL/min  
 Detector : UV 254nm  
 Injection : 2 $\mu$ L (10mg/mL)

**OA-4700** $\alpha = 1.06$ 

Column : 4mm i.d.×250mm  
 Mobile phase :  
 hexane/ethanol/  
 trifluoroacetic acid (240/10/1)  
 Flow rate : 0.8mL/min  
 Detector : UV 254nm

