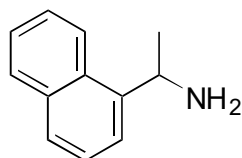


## C-02 1-(1-Naphthyl)-ethylamine

**OA-8000** $\alpha = 1.45$ 

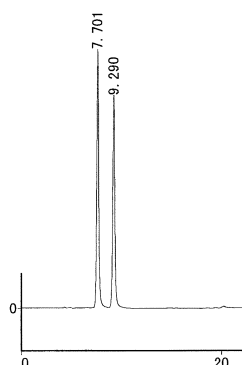
Column : 4.6mm i.d.×250mm

Mobile phase :

acetonitrile/perchloric  
acid (pH 2.0) (30/70)

Flow rate : 0.8mL/min

Detector : UV 254nm

Injection : 1 $\mu$ L (1mg/mL)**OA-4700** $\alpha = 1.16$ 

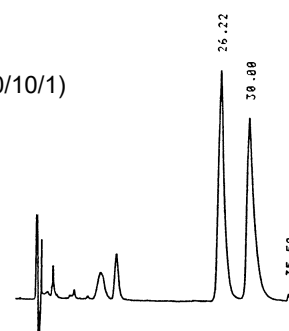
Column : 4mm i.d.×250mm

Mobile phase :

hexane/ethanol/  
trifluoroacetic acid (240/10/1)

Flow rate : 1mL/min

Detector : UV 254nm

**OA-4100** $\alpha = 1.08$ 

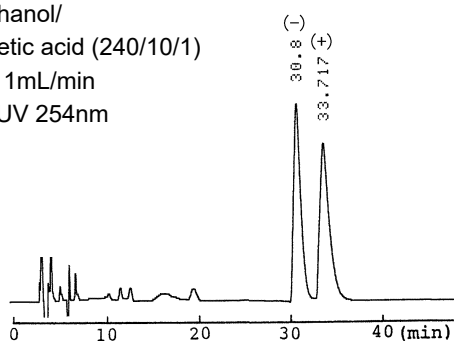
Column : 4.6mm i.d.×250mm

Mobile phase :

hexane/ethanol/  
trifluoroacetic acid (240/10/1)

Flow rate : 1mL/min

Detector : UV 254nm

**OA-4800** $\alpha = 1.08$ 

Column : 4mm i.d.×250mm

Mobile phase :

hexane/ethanol/  
trifluoroacetic acid (240/10/1)

Flow rate : 1mL/min

Detector : UV 254nm

