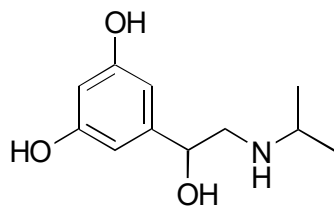


B-29

Metaproterenol

**OA-7700** $\alpha = 1.39$

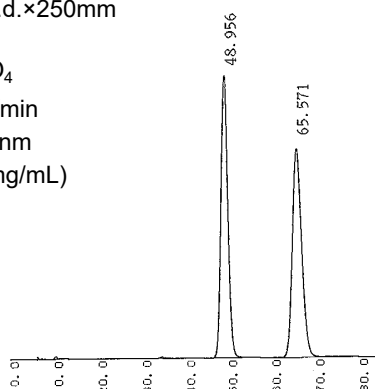
Column : 4.6mm i.d.×250mm

Mobile phase :
20mmol/L KH₂PO₄

Flow rate : 0.5mL/min

Detector : UV 210nm

Injection : 1μL (2mg/mL)

**OA-4900** $\alpha = 1.19$

Column : 4.6mm i.d.×250mm

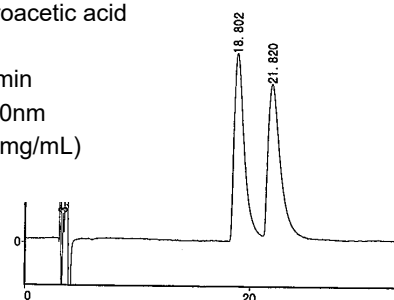
Mobile phase :
hexane/tetrahydrofuran/
methanol/trifluoroacetic acid

(60/35/5/0.2)

Flow rate : 1mL/min

Detector : UV 280nm

Injection : 5μL (1mg/mL)

**OA-7000** $\alpha = 1.12$

Column : 4.6mm i.d.×250mm

Mobile phase :
acetonitrile/20mmol/L potassium
phosphate buffer (pH 6.5) (5/95)

Flow rate : 0.5mL/min

Detector : UV 254nm

Injection : 5μL (1mg/mL)

