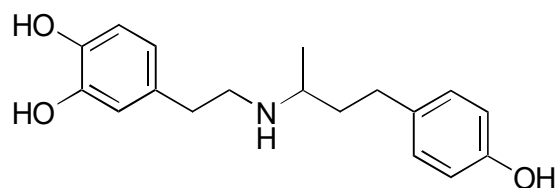


B-26

Dobutamine

**OA-4800** $\alpha = 1.15$

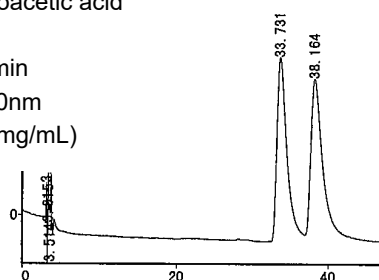
Column : 4.6mm i.d.×250mm

Mobile phase :

hexane/tetrahydrofuran/
methanol/trifluoroacetic acid
(60/35/5/0.2)

Flow rate : 1mL/min

Detector : UV 280nm

Injection : 2 μ L (1mg/mL)**CBH** $\alpha = 1.81$

Column : 4mm i.d.×100mm

Mobile phase :

5% 2-propanol in 10mmol/L
sodium phosphate buffer
(pH 6.0) + 50 μ mol/L EDTA

Flow rate : 0.9mL/min

Detector : UV 225nm

