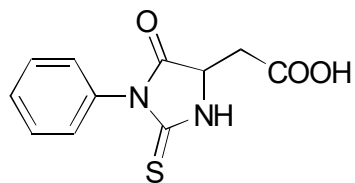


A-38 PTH-aspartic acid

**OA-4700** $\alpha = 1.19$

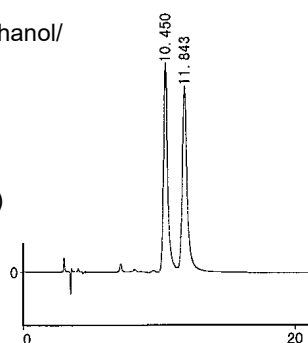
Column : 4.6mm i.d.×250mm

Mobile phase :

hexane/2-propanol/methanol/
trifluoroacetic acid
(80/15/5/0.2)

Flow rate : 1mL/min

Detector : UV 254nm

Injection : 1 μ L (1mg/mL)**OA-4100** $\alpha = 1.16$

Column : 4.6mm i.d.×250mm

Mobile phase :

hexane/2-propanol/methanol/
trifluoroacetic acid
(80/15/5/0.2)

Flow rate : 1mL/min

Detector : UV 254nm

Injection : 1 μ L (1mg/mL)