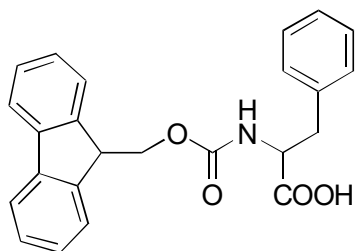


A-30

N-FMOC-phenylalanine

**OA-3200** $\alpha = 1.10$

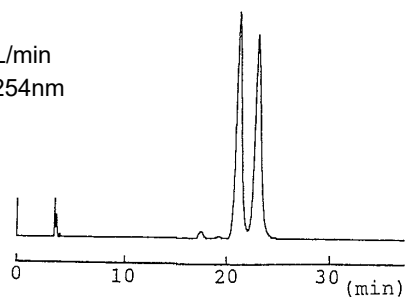
Column : 4.6mm i.d.×250mm

Mobile phase :

0.01mol/L ammonium acetate
in methanol

Flow rate : 1mL/min

Detector : UV 254nm

**OA-3300** $\alpha = 1.08$

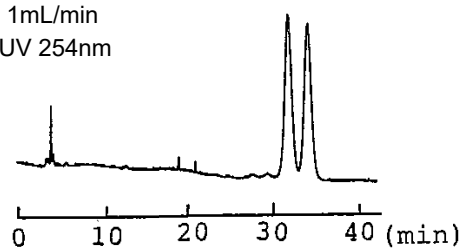
Column : 4.6mm i.d.×250mm

Mobile phase :

0.01mol/L ammonium acetate
in methanol

Flow rate : 1mL/min

Detector : UV 254nm

**OA-7000** $\alpha = 1.05$

Column : 4.6mm i.d.×250mm

Mobile phase :

acetonitrile/20mmol/L potassium
phosphate buffer (pH 4.7) (30/70)

Flow rate : 0.7mL/min

Detector : UV 254nm

Injection : 7.5 μ L (2mg/mL)