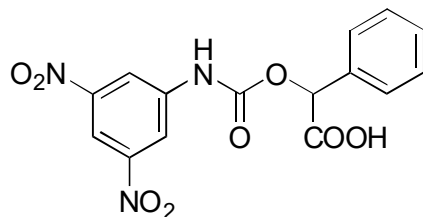


A-29

O-(3,5-Dinitrophenyl)aminocarbonyl mandelic acid

**OA-3100** $\alpha = 1.36$ 

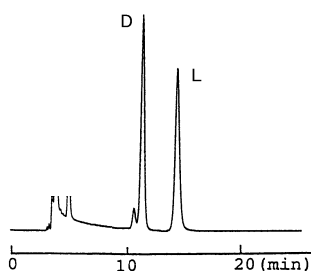
Column : 4.6mm i.d.×250mm

Mobile phase :

0.03mol/L ammonium acetate  
in methanol

Flow rate : 1mL/min

Detector : UV 254nm

**OA-3200** $\alpha = 1.35$ 

Column : 4.6mm i.d.×250mm

Mobile phase :

0.03mol/L ammonium acetate  
in methanol

Flow rate : 1mL/min

Detector : UV 254nm

