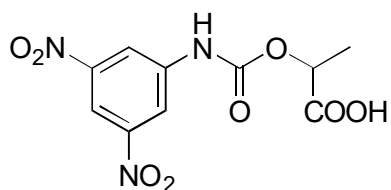


A-28

O-(3,5-Dinitrophenyl)aminocarbonyl lactic acid

**OA-3100** $\alpha = 1.79$

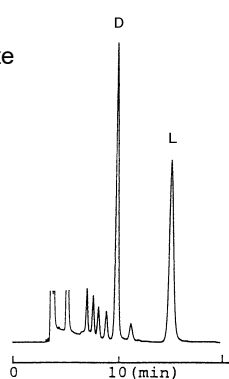
Column : 4.6mm i.d.×250mm

Mobile phase :

0.03mol/L ammonium acetate
in methanol

Flow rate : 1mL/min

Detector : UV 254nm

**OA-3200** $\alpha = 1.77$

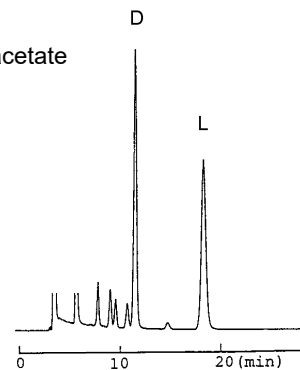
Column : 4.6mm i.d.×250mm

Mobile phase :

0.03mol/L ammonium acetate
in methanol

Flow rate : 1mL/min

Detector : UV 254nm

**OA-3300** $\alpha = 1.31$

Column : 4.6mm i.d.×250mm

Mobile phase :

0.05mol/L ammonium acetate
in methanol

Flow rate : 1mL/min

Detector : UV 254nm

