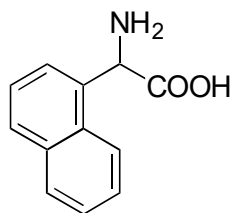


A-26

Naphthylglycine

**OA-6100** $\alpha = 1.91$

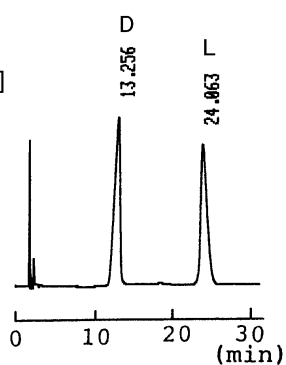
Column : 4.6mm i.d.×150mm

Mobile phase :

2mmol/L copper(II) sulfate
in [water/acetonitrile (90/10)]

Flow rate : 1mL/min

Detector : UV 254nm

Injection : 1 μ L (15mg/mL)**OA-5000** $\alpha = 1.42$

Column : 4.6mm i.d.×150mm, 60°C

Mobile phase :

2mmol/L copper(II) sulfate
in [water/2-propanol (85/15)]

Flow rate : 1mL/min

Detector : UV 254nm

