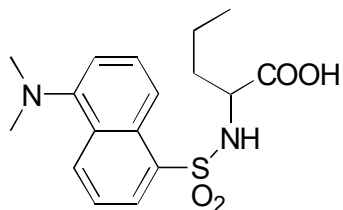


A-16

N-Dansylnorvaline

**OA-3200** $\alpha = 1.24$

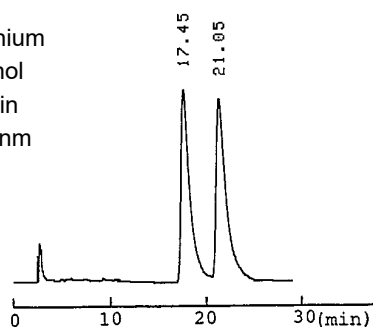
Column : 4mm i.d.×250mm

Mobile phase :

0.01mol/L ammonium
acetate in methanol

Flow rate : 1mL/min

Detector : UV 254nm

**OA-3100** $\alpha = 1.15$

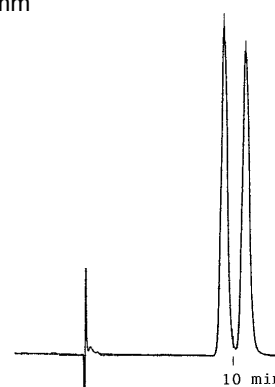
Column : 4mm i.d.×250mm

Mobile phase :

0.01mol/L ammonium
acetate in methanol

Flow rate : 1mL/min

Detector : UV 254nm

**OA-3300** $\alpha = 1.12$

Column : 4mm i.d.×250mm

Mobile phase :

0.01mol/L ammonium
acetate in methanol

Flow rate : 1mL/min

Detector : UV 254nm

