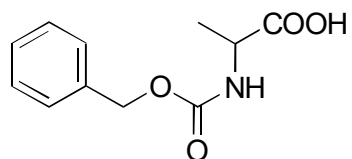


A-08

Z-alanine

**OA-3200** $\alpha = 1.16$ 

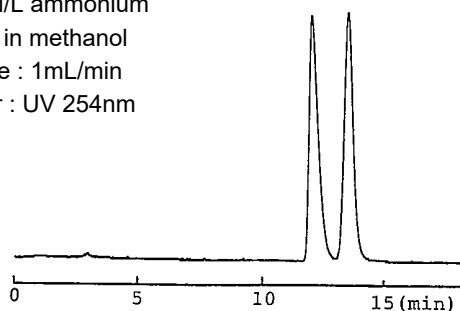
Column : 4mm i.d.×250mm

Mobile phase :

0.01mol/L ammonium  
acetate in methanol

Flow rate : 1mL/min

Detector : UV 254nm

**OA-4400** $\alpha = 1.08$ 

Column : 4.6mm i.d.×250mm

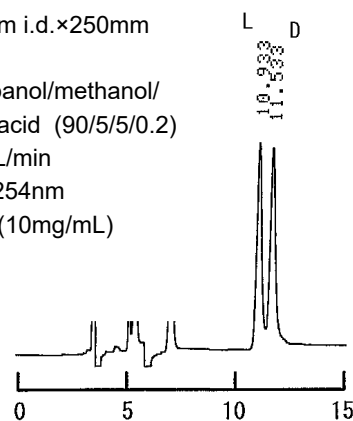
Mobile phase :

hexane/2-propanol/methanol/  
trifluoroacetic acid (90/5/5/0.2)

Flow rate : 1mL/min

Detector : UV 254nm

Injection : 2μL (10mg/mL)

**OA-3300** $\alpha = 1.05$ 

Column : 4mm i.d.×250mm

Mobile phase :

0.01mol/L ammonium  
acetate in methanol

Flow rate : 1mL/min

Detector : UV 254nm

