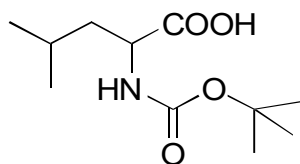


G-27

BOC-leucine

**OA-4400** $\alpha=1.10$

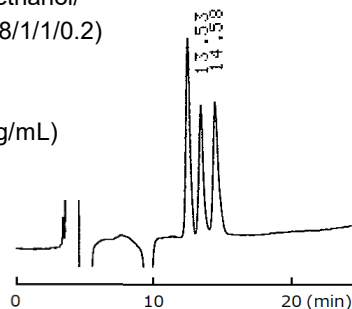
Column : 4.6mm i.d.×250mm

Mobile phase :

hexane/2-propanol/methanol/
trifluoroacetic acid (98/1/1/0.2)

Flow rate : 1mL/min

Detector : UV 254nm

Injection : 5 μ L (13.2mg/mL)**OA-4700** $\alpha=1.09$

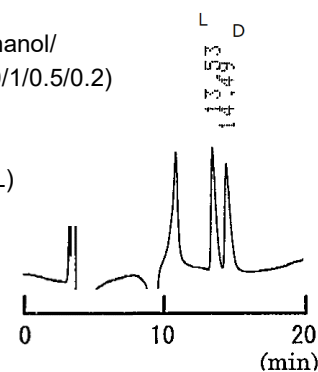
Column : 4.6mm i.d.×250mm

Mobile phase :

hexane/2-propanol/methanol/
trifluoroacetic acid (100/1/0.5/0.2)

Flow rate : 1mL/min

Detector : UV 230nm

Injection : 3 μ L (12mg/mL)**OA-3300** $\alpha=1.05$

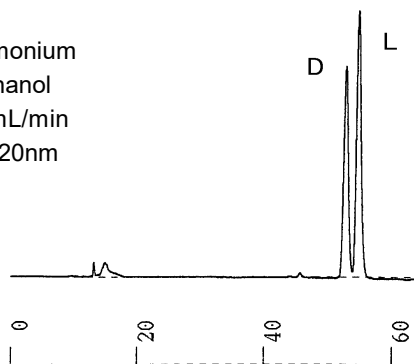
Column : 4.6mm i.d.×250mm×2

Mobile phase :

0.01mol/L ammonium
acetate in methanol

Flow rate : 0.5mL/min

Detector : UV 220nm

**OA-3200** $\alpha=1.04$

Column : 4mm i.d.×250mm

Mobile phase :

0.01mol/L ammonium
acetate in methanol

Flow rate : 1mL/min

Detector : UV 230nm

