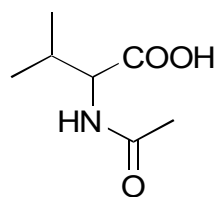
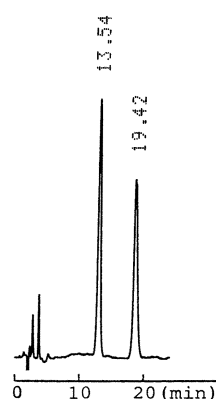


G-23

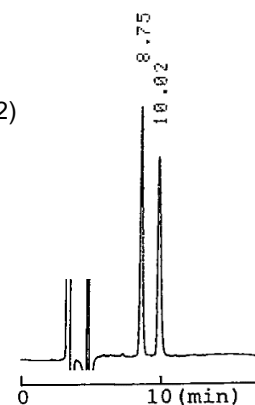
## N-Acetylvaline

**OA-5000** $\alpha=1.50$ 

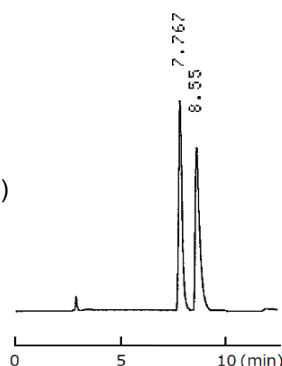
Column : 4.6mm i.d.×150mm  
 Mobile phase :  
 2mmol/L copper(II) sulfate  
 in [water/acetonitrile (85/15)]  
 Flow rate : 1mL/min  
 Detector : UV 254nm

**OA-4700** $\alpha=1.24$ 

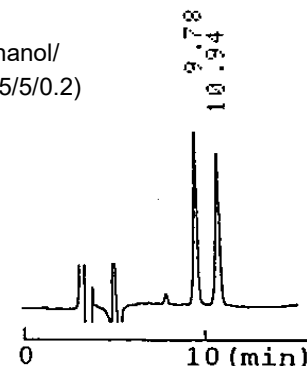
Column : 4.6mm i.d.×250mm  
 Mobile phase :  
 hexane/2-propanol/methanol/  
 trifluoroacetic acid (90/5/5/0.2)  
 Flow rate : 1mL/min  
 Detector : UV 230nm  
 Injection : 3 $\mu$ L (10mg/mL)

**OA-4700** $\alpha=1.18$ 

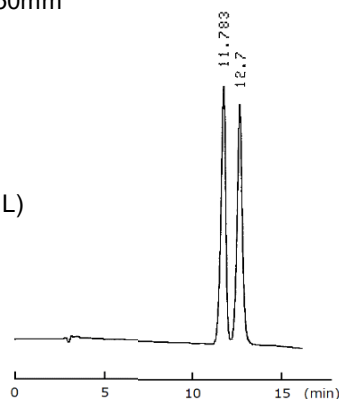
Column : 4.6mm i.d.×250mm  
 Mobile phase :  
 0.02mol/L ammonium  
 acetate in methanol  
 Flow rate : 1mL/min  
 Detector : UV 230nm  
 Injection : 2 $\mu$ L (10mg/mL)

**OA-4600** $\alpha=1.18$ 

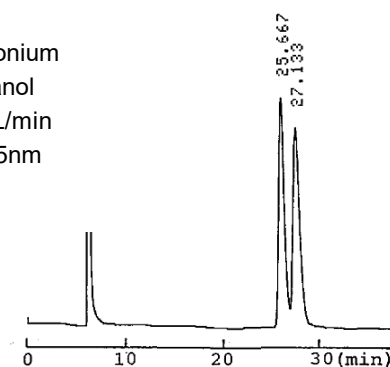
Column : 4.6mm i.d.×250mm  
 Mobile phase :  
 hexane/2-propanol/methanol/  
 trifluoroacetic acid (90/5/5/0.2)  
 Flow rate : 1mL/min  
 Detector : UV 230nm

**OA-4600** $\alpha=1.11$ 

Column : 4.6mm i.d.×250mm  
 Mobile phase :  
 0.02mol/L ammonium  
 acetate in methanol  
 Flow rate : 1mL/min  
 Detector : UV 230nm  
 Injection : 2 $\mu$ L (14mg/mL)

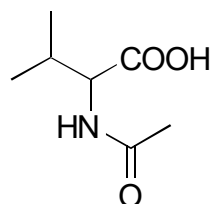
**OA-3300** $\alpha=1.11$ 

Column : 4mm i.d.×250mm  
 Mobile phase :  
 0.01mol/L ammonium  
 acetate in methanol  
 Flow rate : 0.4mL/min  
 Detector : UV 225nm



G-23

N-Acetylvaline

**OA-4000** $\alpha=1.11$ 

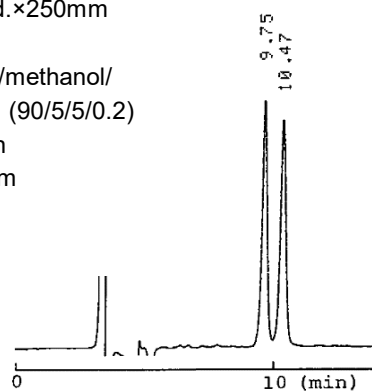
Column : 4.6mm i.d.×250mm

Mobile phase :

hexane/2-propanol/methanol/  
trifluoroacetic acid (90/5/5/0.2)

Flow rate : 1mL/min

Detector : UV 230nm

**OA-4100** $\alpha=1.10$ 

Column : 4.6mm i.d.×250mm

Mobile phase :

hexane/2-propanol/methanol/  
trifluoroacetic acid (90/5/5/0.2)

Flow rate : 1mL/min

Detector : UV 230nm

Injection : 5 $\mu$ L (5mg/mL)