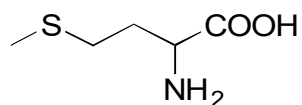


G-09

Methionine

**OA-6100** $\alpha=6.16$

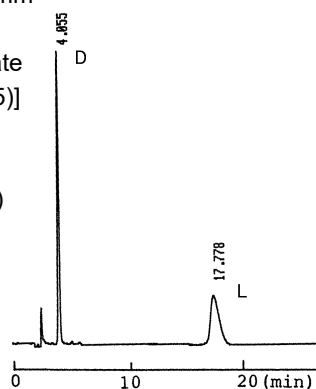
Column : 4.6mm i.d.×150mm

Mobile phase :

2mmol/L copper(II) sulfate
in [water/acetonitrile (95/5)]

Flow rate : 1mL/min

Detector : UV 254nm

Injection : 5 μ L (1.3mg/mL)**OA-6000** $\alpha=4.95$

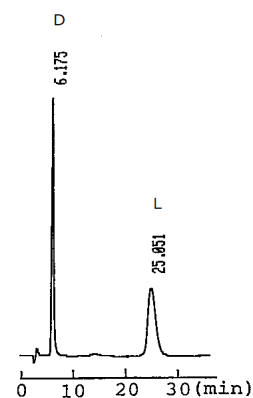
Column : 4.6mm i.d.×150mm

Mobile phase :

2mmol/L copper(II) sulfate
in [water/acetonitrile (95/5)]

Flow rate : 1mL/min

Detector : UV 254nm

**OA-5000** $\alpha=1.28$

Column : 4.6mm i.d.×150mm

Mobile phase :

2mmol/L copper(II) sulfate
in [water/2-propanol (95/5)]

Flow rate : 1mL/min

Detector : UV 254nm

Injection : 5 μ L (2.5mg/mL)