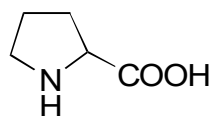


G-04

Proline

**OA-5000** $\alpha=3.07$

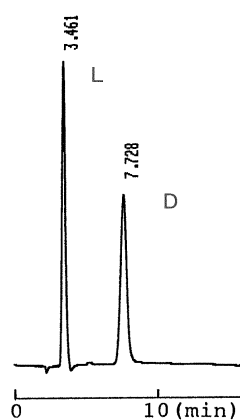
Column : 4.6mm i.d.×150mm

Mobile phase :

2mmol/L copper(II) sulfate
in [water/2-propanol (95/5)]

Flow rate : 1mL/min

Detector : UV 254nm

Injection : 5 μ L (2.5mg/mL)**OA-6100** $\alpha=1.20$

Column : 4.6mm i.d.×150mm

Mobile phase :

1mmol/L copper(II) sulfate
in water

Flow rate : 1mL/min

Detector : UV 254nm

Injection : 3 μ L (2.5mg/mL)