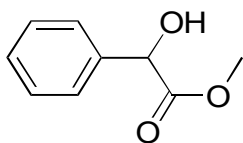


E-06

Methyl mandelate

**OA-2000** $\alpha=1.06$

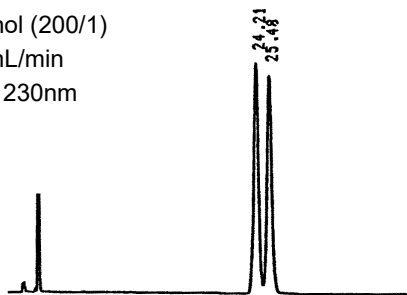
Column : 4mm i.d.×250mm

Mobile phase :

hexane/ethanol (200/1)

Flow rate : 1mL/min

Detector : UV 230nm

**OA-2500I** $\alpha=1.15$

Column : 4mm i.d.×250mm

Mobile phase :

hexane/ethanol (200/1)

Flow rate : 1mL/min

Detector : UV 230nm

