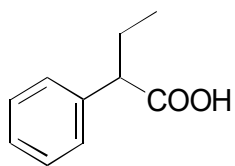
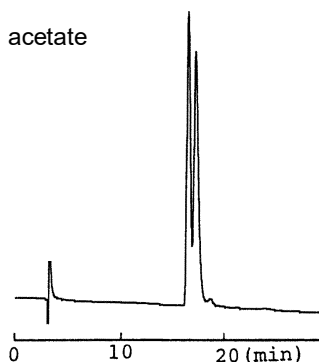


D-14

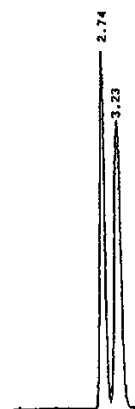
2-Phenylbutyric acid

**OA-2500**

Column : 4.6mm i.d.×250mm
Mobile phase :
0.01mol/L ammonium acetate
in methanol
Flow rate : 1mL/min
Detector : UV 254nm

 $\alpha = 1.05$ **AGP**

Column : 4mm i.d.×100mm
Mobile phase :
ethanol/10mmol/L sodium
phosphate buffer (pH 5.1) (6/94)
Flow rate : 0.9mL/min
Detector : UV 225nm

 $\alpha = 1.30$