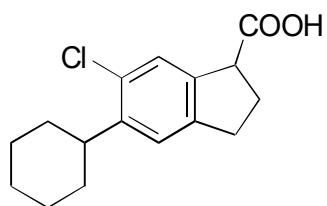


D-05

Clidanac

**OA-3200** $\alpha = 1.56$

Column : 4mm i.d.×250mm

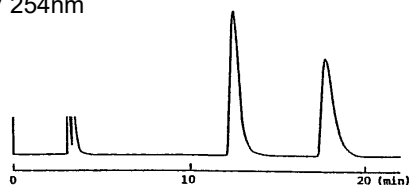
Mobile phase :

0.005mol/L ammonium acetate

in methanol

Flow rate : 0.8mL/min

Detector : UV 254nm

**OA-3100** $\alpha = 1.47$

Column : 4.6mm i.d.×250mm

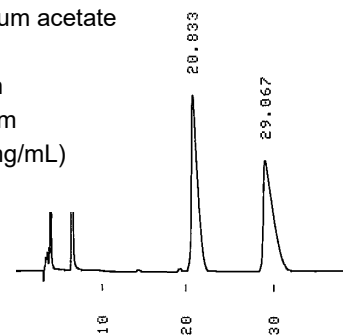
Mobile phase :

0.01mol/L ammonium acetate

in methanol

Flow rate : 1mL/min

Detector : UV 254nm

Injection : 10 μ L (7mg/mL)**OA-7000** $\alpha = 1.72$

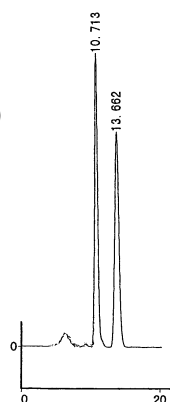
Column : 4.6mm i.d.×250mm

Mobile phase :

acetonitrile/20mmol/L potassium
phosphate buffer (pH 3.5) (70/30)

Flow rate : 0.5mL/min

Detector : UV 240nm

Injection : 5 μ L (1mg/mL)**OA-3300** $\alpha = 1.17$

Column : 4mm i.d.×250mm

Mobile phase :

0.01mol/L ammonium acetate

in methanol

Flow rate : 1mL/min

Detector : UV 254nm

