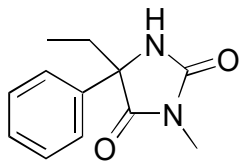


C-47

Mephenytoin

**AGP**

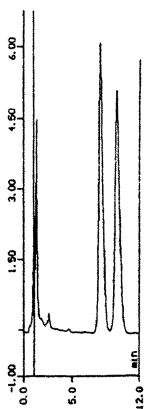
Column : 4mm i.d.×100mm

Mobile phase :

1-propanol/100mmol/L sodium
phosphate buffer (pH 7.0) (0.3/99.7)

Flow rate : 0.9mL/min

Detector : UV 225nm

 $\alpha = 1.23$ **HSA**

Column : 4mm i.d.×100mm

Mobile phase :

10mmol/L sodium phosphate
buffer (pH 7.0)

Flow rate : 0.9mL/min

Detector : UV 225nm

 $\alpha = 1.36$ 