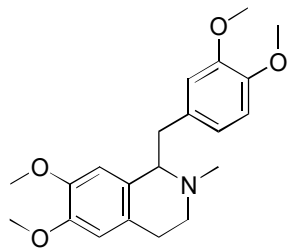


C-45

Laudanosine

**CBH** $\alpha = 2.06$

Column : 4mm i.d.×100mm

Mobile phase :

5% 2-propanol in 10mmol/L

sodium phosphate buffer

(pH 6.0) + 50 μ mol/L EDTA

Flow rate : 0.9mL/min

Detector : UV 225nm

