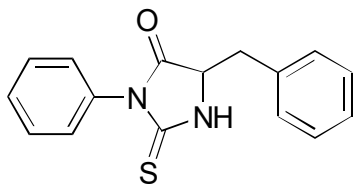


C-18

PTH-phenylalanine

**OA-4700** $\alpha = 1.52$ 

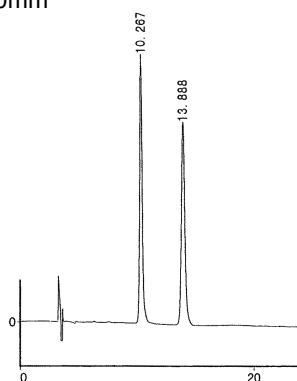
Column : 4.6mm i.d.×250mm

Mobile phase :

hexane/2-propanol/  
methanol/trifluoroacetic  
acid (90/8/2/0.2)

Flow rate : 1mL/min

Detector : UV 254nm

Injection : 1 $\mu$ L (1mg/mL)**OA-4100** $\alpha = 1.34$ 

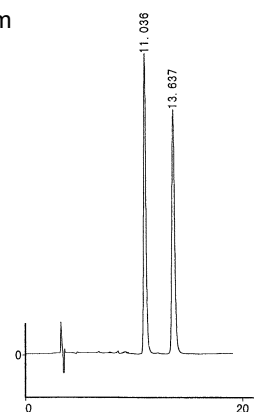
Column : 4.6mm i.d.×250mm

Mobile phase :

hexane/2-propanol/  
methanol/trifluoroacetic  
acid (90/8/2/0.2)

Flow rate : 1mL/min

Detector : UV 254nm

Injection : 1 $\mu$ L (1mg/mL)**OA-7000** $\alpha = 1.23$ 

Column : 4.6mm i.d.×250mm

Mobile phase :

acetonitrile/20mmol/L potassium  
phosphate buffer (pH 3.5) (10/90)

Flow rate : 1mL/min

Detector : UV 254nm

Injection : 1 $\mu$ L (1mg/mL)