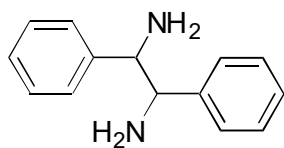


C-14 | **1,2-Diphenylethylenediamine****OA-5000** $\alpha = 1.10$

Column : 4.6mm i.d.×150mm × 2, 40°C

Mobile phase :

1mmol/L copper(II) acetate and
0.1mol/L ammonium acetate in
[water/2-propanol (85/15)] (pH 4.5)

Flow rate : 1mL/min

Detector : UV 280nm

