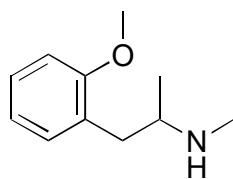


C-09

Methoxyphenamine

**OA-4400** $\alpha = 1.07$

Column : 4.6mm i.d. x 250mm

Mobile phase :

hexane/tetrahydrofuran/

methanol/trifluoroacetic

acid (60/35/5/0.2)

Flow rate : 1mL/min

Detector : UV 254nm

Injection : 2 μ L (1mg/mL)