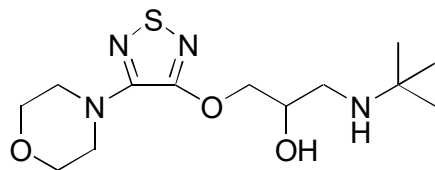
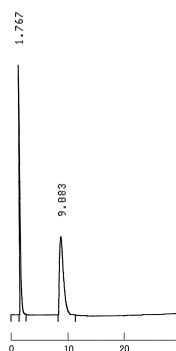


B-64

Timolol

**CBH** $\alpha = 3.50$

Column : 4mm i.d.×100mm
 Mobile phase :
 10% 2-propanol in 10mmol/L
 sodium phosphate buffer
 (pH 6.0) + 50 μ mol/L EDTA
 Flow rate : 0.5mL/min
 Detector : UV 254nm
 Injection : 2 μ L (1mg/mL)

**AGP** $\alpha = 1.68$

Column : 4mm i.d.×100mm
 Mobile phase :
 2-propanol/10mmol/L sodium
 phosphate buffer (pH 7.0) (2.5/97.5)
 Flow rate : 0.9mL/min
 Detector : UV 210nm

