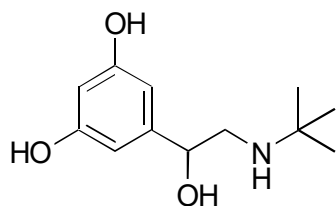


**B-14**      **Terbutaline**
**OA-4900** $\alpha = 1.25$ 

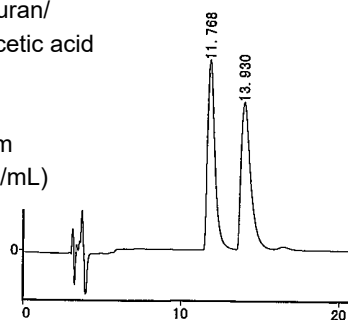
Column : 4.6mm i.d.×250mm

Mobile phase :

hexane/tetrahydrofuran/  
methanol/trifluoroacetic acid  
(60/35/5/0.2)

Flow rate : 1mL/min

Detector : UV 280nm

Injection : 5 $\mu$ L (1mg/mL)**OA-4700** $\alpha = 1.13$ 

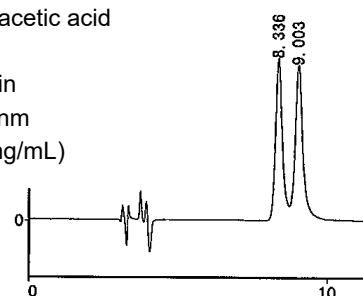
Column : 4.6mm i.d.×250mm

Mobile phase :

hexane/tetrahydrofuran/  
methanol/trifluoroacetic acid  
(60/35/5/0.2)

Flow rate : 1mL/min

Detector : UV 280nm

Injection : 2 $\mu$ L (1mg/mL)**AGP** $\alpha = 1.31$ 

Column : 4mm i.d.×100mm

Mobile phase :

10mmol/L sodium phosphate  
buffer (pH 7.0)

Flow rate : 0.9mL/min

Detector : UV 225nm

