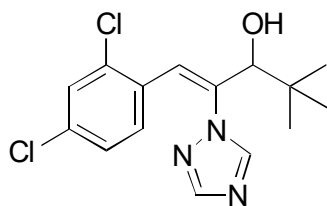


B-08

Diniconazole

**OA-4600** $\alpha = 1.19$

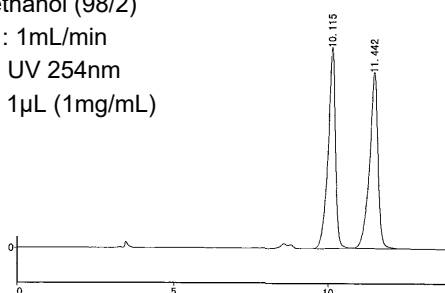
Column : 4.6mm i.d.×250mm

Mobile phase :

hexane/ethanol (98/2)

Flow rate : 1mL/min

Detector : UV 254nm

Injection : 1 μ L (1mg/mL)**OA-4700** $\alpha = 1.15$

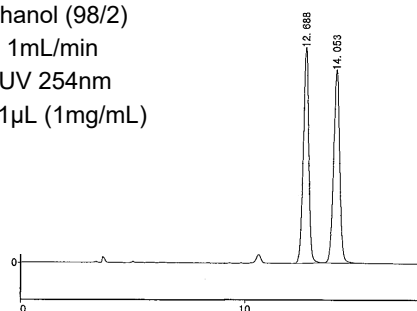
Column : 4.6mm i.d.×250mm

Mobile phase :

hexane/ethanol (98/2)

Flow rate : 1mL/min

Detector : UV 254nm

Injection : 1 μ L (1mg/mL)**OA-4000** $\alpha = 1.13$

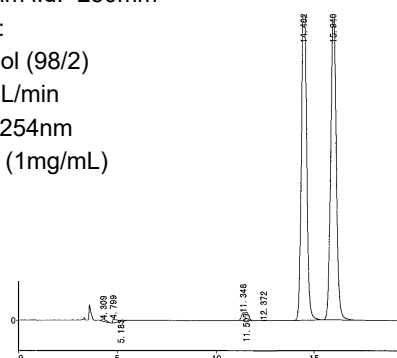
Column : 4.6mm i.d.×250mm

Mobile phase :

hexane/ethanol (98/2)

Flow rate : 1mL/min

Detector : UV 254nm

Injection : 1 μ L (1mg/mL)**OA-4100** $\alpha = 1.13$

Column : 4.6mm i.d.×250mm

Mobile phase :

hexane/ethanol (98/2)

Flow rate : 1mL/min

Detector : UV 254nm

Injection : 1 μ L (1mg/mL)