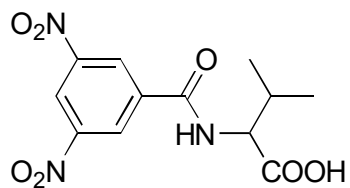


A-35

N-3,5-Dinitrobenzoylvaline

**OA-4800** $\alpha=2.02$

Column : 4.6mm i.d.×250mm

Mobile phase:

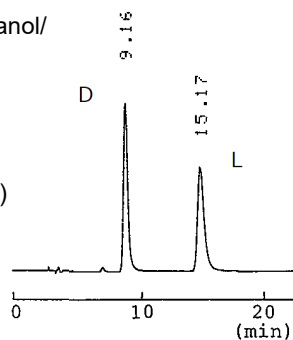
hexane/2-propanol/methanol/

trifluoroacetic acid

(70/20/10/0.2)

Flow rate : 1mL/min

Detector : UV 254nm

Injection : 0.5 μ L (2mg/mL)**OA-4900** $\alpha=1.30$

Column : 4.6mm i.d.×250mm

Mobile phase:

hexane/2-propanol/methanol/

trifluoroacetic acid

(70/20/10/0.2)

Flow rate : 1mL/min

Detector : UV 254nm

