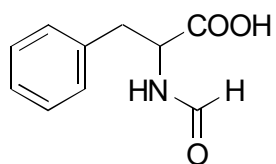


A-33

N-Formylphenylalanine

**OA-4700** $\alpha = 1.12$

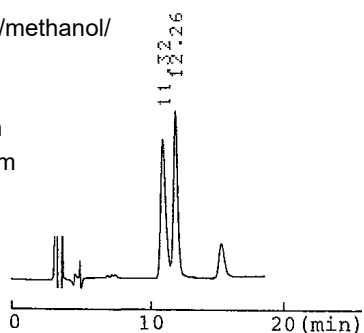
Column : 4.6mm i.d.×250mm

Mobile phase :

hexane/2-propanol/methanol/
trifluoroacetic acid
(90/5/5/0.2)

Flow rate : 1mL/min

Detector : UV 254nm

**OA-4500** $\alpha = 1.07$

Column : 4.6mm i.d.×250mm

Mobile phase :

hexane/2-propanol/methanol/
trifluoroacetic acid
(90/5/5/0.2)

Flow rate : 1mL/min

Detector : UV 254nm

