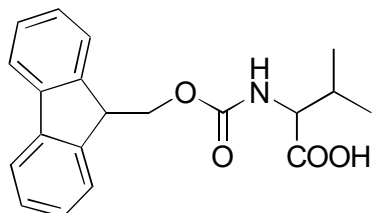
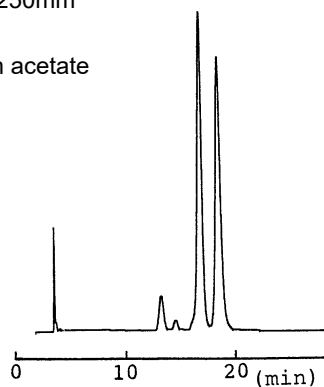


A-31

N-FMOC-valine

**OA-3200** $\alpha = 1.12$

Column : 4.6mm i.d.×250mm
Mobile phase :
0.01mol/L ammonium acetate
in methanol
Flow rate : 1mL/min
Detector : UV 254nm

**OA-3300** $\alpha = 1.08$

Column : 4.6mm i.d.×250mm
Mobile phase :
0.01mol/L ammonium acetate
in methanol
Flow rate : 1mL/min
Detector : UV 254nm

