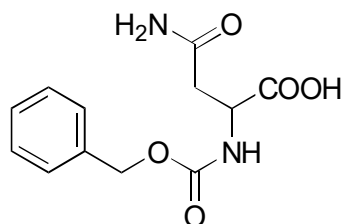


A-13

Z-asparagine

**OA-3100** $\alpha = 1.12$

Column : 4mm i.d.×250mm

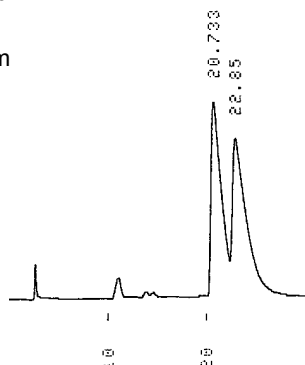
Mobile phase :

0.005mol/L ammonium

acetate in methanol

Flow rate : 1mL/min

Detector : UV 254nm

**OA-3200** $\alpha = 1.11$

Column : 4mm i.d.×250mm

Mobile phase :

0.005mol/L ammonium

acetate in methanol

Flow rate : 1mL/min

Detector : UV 254nm

