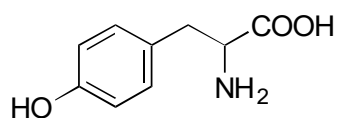
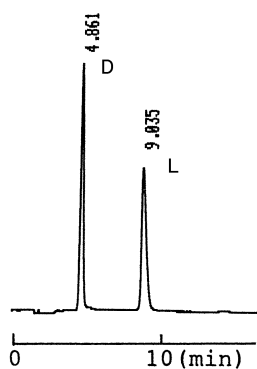


A-03

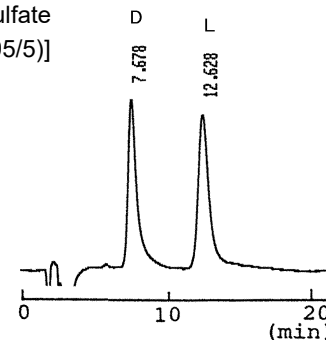
Tyrosine

**OA-6100** $\alpha = 2.21$

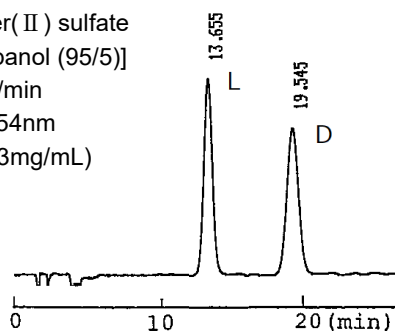
Column : 4.6mm i.d.×150mm
 Mobile phase :
 2mmol/L copper(II) sulfate
 in [water/acetonitrile (95/5)]
 Flow rate : 1mL/min
 Detector : UV 254nm
 Injection : 2 μ L (3mg/mL)

**OA-6000** $\alpha = 1.79$

Column : 4.6mm i.d.×150mm
 Mobile phase :
 2mmol/L copper(II) sulfate
 in [water/acetonitrile (95/5)]
 Flow rate : 1mL/min
 Detector : UV 254nm

**OA-5000** $\alpha = 1.48$

Column : 4.6mm i.d.×150mm
 Mobile phase :
 2mmol/L copper(II) sulfate
 in [water/2-propanol (95/5)]
 Flow rate : 1mL/min
 Detector : UV 254nm
 Injection : 3 μ L (3mg/mL)

**OA-8000** $\alpha = 1.44$

Column : 4.6mm i.d.×250mm
 Mobile phase :
 hexane/ethanol/trifluoroacetic acid/
 water (70/30/0.5/0.5)
 Flow rate : 0.7mL/min
 Detector : UV 254nm
 Injection : 2 μ L (5mg/mL)

