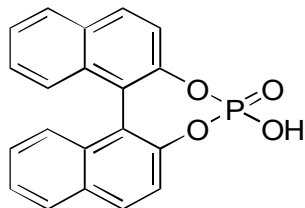


J-04

1,1'-Binaphthyl-2,2'-diyl hydrogen phosphate

**OA-3100** $\alpha=2.66$

Column : 4mm i.d.×250mm

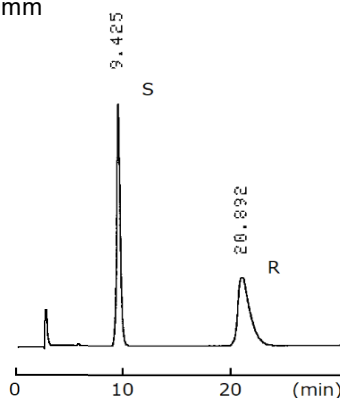
Mobile phase :

0.03mol/L ammonium

acetate in methanol

Flow rate : 1mL/min

Detector : UV 254nm

**OA-3200** $\alpha=1.34$

Column : 4mm i.d.×250mm

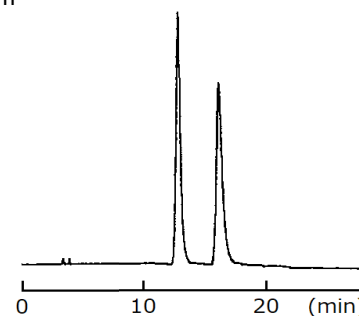
Mobile phase :

0.01mol/L ammonium

acetate in methanol

Flow rate : 1mL/min

Detector : UV 254nm

**OA-3300** $\alpha=1.31$

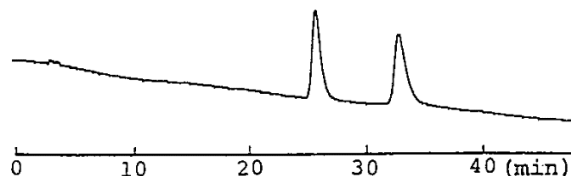
Column : 4mm i.d.×250mm

Mobile phase :

0.01mol/L ammonium acetate in methanol

Flow rate : 1mL/min

Detector : UV 254nm

**OA-4700** $\alpha=1.21$

Column : 4mm i.d.×250mm

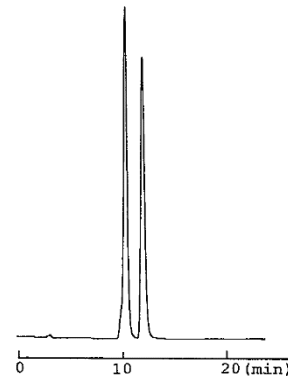
Mobile phase :

0.03mol/L ammonium

acetate in methanol

Flow rate : 1mL/min

Detector : UV 254nm

**OA-4000** $\alpha=1.14$

Column : 4mm i.d.×250mm

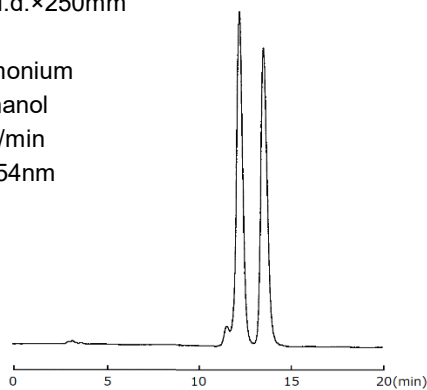
Mobile phase :

0.03mol/L ammonium

acetate in methanol

Flow rate : 1mL/min

Detector : UV 254nm

**OA-2500** $\alpha=1.12$

Column : 4mm i.d.×250mm

Mobile phase :

0.03mol/L ammonium

acetate in methanol

Flow rate : 0.7mL/min

Detector : UV 254nm

