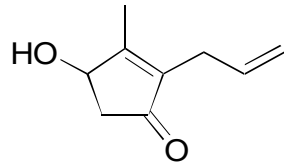


I-06

Allethrolone

**OA-4100** $\alpha = 1.09$

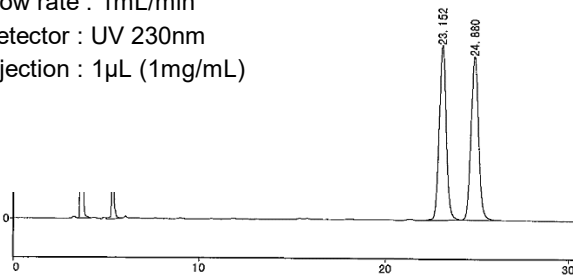
Column : 4.6mm i.d.×250mm

Mobile phase :

hexane/ethanol (98/2)

Flow rate : 1mL/min

Detector : UV 230nm

Injection : 1 μ L (1mg/mL)**OA-4500** $\alpha = 1.08$

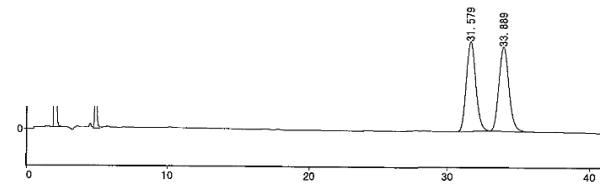
Column : 4.6mm i.d.×250mm

Mobile phase :

hexane/ethanol (98/2)

Flow rate : 1mL/min

Detector : UV 230nm

Injection : 1 μ L (1mg/mL)**OA-4700** $\alpha = 1.08$

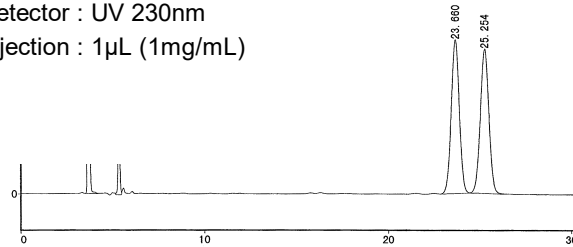
Column : 4.6mm i.d.×250mm

Mobile phase :

hexane/ethanol (98/2)

Flow rate : 1mL/min

Detector : UV 230nm

Injection : 1 μ L (1mg/mL)**OA-7700** $\alpha = 1.11$

Column : 4.6mm i.d.×250mm

Mobile phase : water

Flow rate : 0.5mL/min

Detector : UV 230nm

Injection : 2 μ L (1mg/mL)