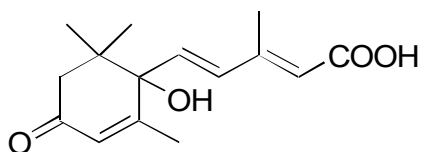
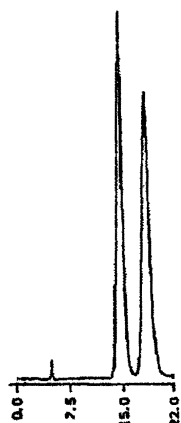


H-14

Abscisic acid

**AGP**

Column : 4mm i.d.×100mm
Mobile phase :
75mmol/L sodium phosphate
buffer (pH 5.0)
Flow rate : 0.9mL/min
Detector : UV 225nm

 $\alpha = 1.26$ **OA-4700**

Column : 4.6mm i.d.×250mm
Mobile phase :
hexane/2-propanol/methanol/
trifluoroacetic acid (97/2/1/0.2)
Flow rate : 1mL/min
Detector : UV 254nm
Injection : 0.2 μ L (1mg/mL)

 $\alpha = 1.06$ 