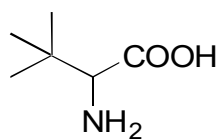


G-32 tert-Leucine

**OA-6100** $\alpha=5.48$

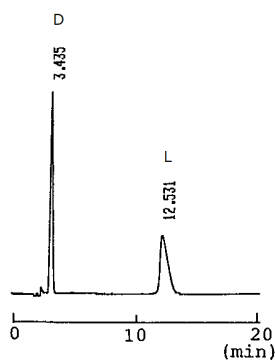
Column : 4.6mm i.d.×150mm

Mobile phase :

2mmol/L copper(II) sulfate
in [water/acetonitrile (90/10)]

Flow rate : 1mL/min

Detector : UV 254nm

Injection : 2 μ L (4mg/mL)**OA-5000** $\alpha=1.81$

Column : 4.6mm i.d.×150mm

Mobile phase :

2mmol/L copper(II) sulfate
in [water/2-propanol (95/5)]

Flow rate : 1mL/min

Detector : UV 254nm

Injection : 3 μ L (3mg/mL)