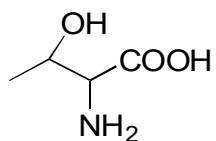


G-18 **Allothreonine**
**OA-6100** $\alpha=6.34$

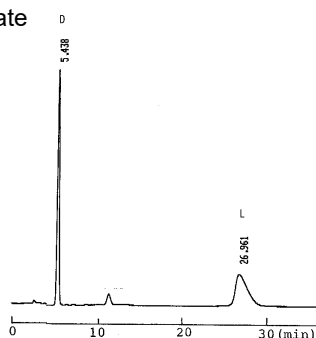
Column : 4.6mm i.d.×150mm

Mobile phase :

1mmol/L copper(II) sulfate
in water

Flow rate : 1mL/min

Detector : UV 254nm

Injection : 3 μ L (3mg/mL)**OA-6000** $\alpha=3.93$

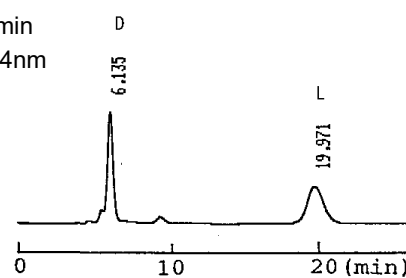
Column : 4.6mm i.d.×150mm

Mobile phase :

1mmol/L copper(II) sulfate
in water

Flow rate : 1mL/min

Detector : UV 254nm

**OA-5000** $\alpha=1.19$

Column : 4.6mm i.d.×150mm

Mobile phase :

0.5mmol/L copper(II) acetate
in water

Flow rate : 0.5mL/min

Detector : UV 254nm

