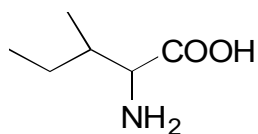


G-14

Isoleucine

**OA-6000** $\alpha=3.49$

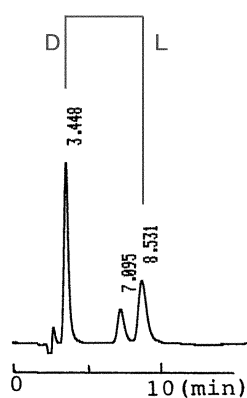
Column : 4.6mm i.d.×150mm

Mobile phase :

2mmol/L copper(II) sulfate
in [water/acetonitrile (85/15)]

Flow rate : 1mL/min

Detector : UV 254nm

**OA-5000** $\alpha=1.72$

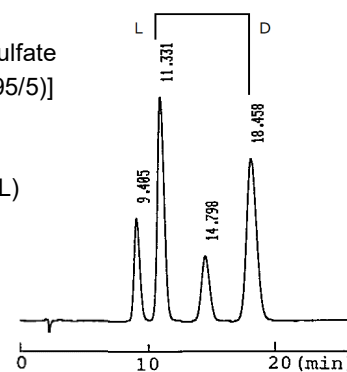
Column : 4.6mm i.d.×150mm

Mobile phase :

2mmol/L copper(II) sulfate
in [water/2-propanol (95/5)]

Flow rate : 1mL/min

Detector : UV 254nm

Injection : 5 μ L (4mg/mL)**OA-6100** $\alpha=1.45$

Column : 4.6mm i.d.×150mm

Mobile phase :

2mmol/L copper(II) sulfate
in [water/acetonitrile (90/10)]

Flow rate : 1mL/min

Detector : UV 254nm

Injection : 5 μ L (2mg/mL)